

Dear AMS community,

PAG will be running the annual AMS wreath drive this year. We know that fundraising isn't at the top of many families to do lists during this uncertain time. However, in an effort to continue to provide the same level of support to AMS as in years past, as well as maintain the wreath fundraiser for future 8th grade classes, we are happy to take it on.

We are hopeful that with enough participation we will not only be able to reach our fall fundraising goal, but may also raise enough money to make up for some of the other PAG fundraisers that are typically held throughout the school year. We appreciate any amount of participation by students. Every wreath sold helps fund programming and opportunities for AMS students!

For more information please see attachment, weekly poly and/or the PAG Facebook page. Any questions, please contact Sheila Beach at Sheilajbeach@yahoo.com.

Thank you!

-AMS PAG



Amesbury Middle School PAG Wreath Fundraiser

Sales dates: October 14th – November 4th

Price: \$15 per 18 " wreath, includes red or burgundy bow

Help us raise money to support our school! All money raised goes towards funding programming and field trips for AMS students.

Due to COVID PAG may not be able to hold many of our annual fundraisers throughout the year. Participation is greatly appreciated and supports a wonderful cause.

Payment: New this year, PAG will be accepting Venmo in addition to cash and checks. NOTE: if paying by check, you must submit ONE check for complete order. Checks can be made payable to AMS PAG.

Submitting orders: All orders must be received no later than 3pm, November 4th. Order forms and payment can be left in the PAG mailbox located in the AMS main office OR, if paying completely by Venmo, you can email the completed order form to Sheilajbeach@yahoo.com

Pick up: Wreath pick up will be held on one day November 22-25. Exact date TBD based on delivery from Canada. Families are responsible for coordinating pick up of all wreaths they sold and distributing them within 1 week. Additional information regarding pick up location, date and time will be sent out via connect ed.

**Any questions contact Sheila Beach at
Sheilajbeach@yahoo.com**

Amesbury Middle School PAG Wreath Fundraiser

	NAME	ADDRESS	PHONE	# WREATHS	RED	BURGUNDY	CASH	CHECK	VENMO
1									
2									
3									
4									
5									
6									
7									
8									
9									
10									
11									
12									
13									
14									
15									
TOTAL:									



Christine Harrison
@Christine-Harrison



venmo

Scan QR code for payment

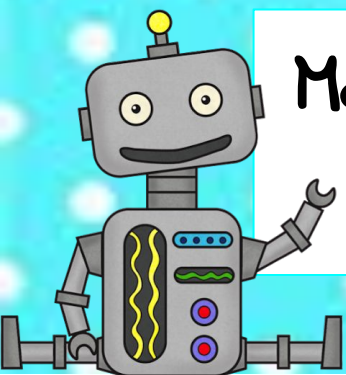
***PLEASE SUBMIT ONE PAYMENT FOR WHOLE ORDER IF
PAYING BY CHECK. Checks can be made out to AMS PAG.
Orders due by 3pm, November 4th**

SELLER NAME: _____

SELLER GRADE/HR #: _____

SELLER PHONE NUMBER: _____

*Payments can be made to PAG treasurer using Venmo. Include "PAG wreath" + student name & grade with payment



Massachusetts STEM week

Family STEM Nights



Massachusetts STEM Week 2020 takes place from October 19 – 23rd. Due to this Amesbury Middle School will be having STEM Family Nights during that week.

Wednesday, October 21, 2020 (6pm-7pm) : Project Lead the Way Family STEM Night

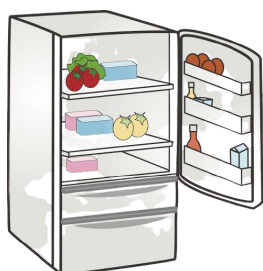
Thursday, October 22, 2020 (6pm-7pm): Desmos Family STEM Night

Friday, October 23, 2020 (All day): Virtual Showcase of the STEM Week Challenge

Please see the following pages for more information.

****All family nights will be virtual and recorded for families that cannot attend but would like to hear the information****

The theme for the third annual statewide STEM Week is “See Yourself in STEM,” with a particular focus on the power of mentoring. Women, people of color, first-generation students, low-income individuals, English language learners, and people with disabilities are underrepresented in STEM industries and make up an increasing portion of the overall workforce, but the demographics of STEM fields have remained largely the same. We need more young people to see themselves in STEM.





Project Lead the Way Family STEM Night

Wednesday October 21, 2020 from 6pm-7pm

Audience: All grade levels

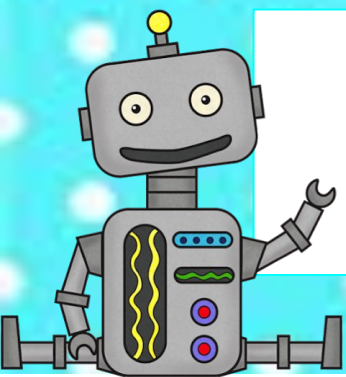
[Sign up for Project Lead the Way night here](#)

[Go to the event link here](#)

Join us virtually to complete a design challenge related to structure and function. Families will be provided design criteria to design and build “Jack’s Beanstalk” capable of holding the provided golden egg at least 14 inches above the table. Participants will have a defined amount of time to design, build, and test their solutions. Families/students will be invited to share their “beanstalk” and discuss their design and build process. This activity will bring us to a discussion of structure and function, the value of designing something before building it, design innovation, and the value of teamwork and communication.

This will be a fun opportunity to learn about Project Lead the Way in the classroom. All you need is ten pipe cleaners, a plastic egg and 1 device per family.

Need ten pipecleaners and a plastic egg? Go to AMS office to grab supplies starting October 13th.



Desmos Family STEM Night



Wednesday October 21, 2020 from 6pm-7pm

Audience: 7th and 8th Grade

[Sign up for Desmos night here](#)

[Go to the event link here](#)

This year, your student's classroom has been selected to participate in the Desmos Middle School Math Curriculum. Join us, as we introduce ourselves and tell you a bit about who we are.

- Explore the field of robotics as we use math to investigate robots.
- Explore the veterinarian career path, as we reason about the size of animal brains.

This will be a fun opportunity to learn about Desmos in the classroom. All you need is paper, pencil, and 1 device per family.



EXPLORE MATH



Virtual STEM week Challenge Showcase

Friday, October 23, 2020, All day

Audience: Grade 5, 6 and 8

[Sign up for Virtual Showcase here](#)

Students in grade 5, 6 and 8 have been working hard on their STEM Week Challenge. In grade 5 students built creative problem solving skills by designing and developing their own math game. In grade 6 and 8 students used

Human-Centered Design to develop and test a prototype solution that assists a person with paralysis with putting items into a refrigerator and then retrieving them with ease. On

Thursday, October 22nd you will be sent a link to either a google site where you can see students work or a flipgrid site where you can put positive comments on students work with a video. Be on a look out for the links that Thursday night!



Amesbury Public Schools

What type of Covid Test is required for the Amesbury Public School Community?

Dear Parents/Guardians, Students, and Staff:

In the event you are advised to obtain a covid test relative to your school involvement, please make sure to get a PCR molecular test instead of an antigen rapid test- see below.

***RECOMMENDATIONS FOR DIAGNOSTIC COVID-19 TESTING:** To evaluate individuals for current infection, a molecular diagnostic test to detect the presence of the virus by polymerase chain reaction (PCR) or other nucleic acid amplification methodology is the gold standard and is the preferred test type. A second method to detect the presence of viral proteins is a diagnostic antigen test. Although these newer diagnostic antigen tests are faster to run, they are less sensitive and less specific and antigen test results must be confirmed by a molecular test.

The following three locations offer molecular tests:

1. Convenient MD - Newburyport 978-225-6607
2. Anna Jaques Hospital Newburyport 978-463-1000
3. CVS - 2 Lafayette Road - Salisbury 978-462-1303

For more details and to view a lovely colored graph explaining covid test differences, please click the link below.

[Copy of covid19-testing-final-508-July.pdf](#)

Thank you and kind regards,

Amesbury School Health Services